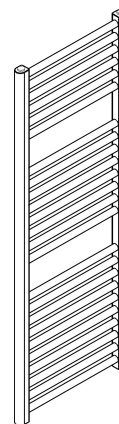


# GRANDE ROVNÝ

# EBS

DGRE06500450SK01-6501



H	L	A	B	C	D	E	F	G
650	450	145	563	87	80	87	73-83	88-98

4.4	kg
2.4	l
286	W

I	J	K	M	N	O	P		
58-68	-	min.100	410	-	-	-		

A 3x 10x50	B 3x	C 3x	D 3x	E 3x
F 3x	G 3x	H 3x M6x60	I 3x M8x35	J 3x

**1.1**

**1.2**

**1.3**

**1.4**

**1.5**

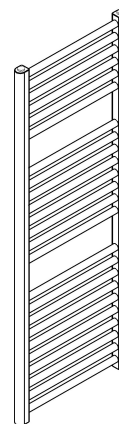
**1.6**

**1.7**

# GRANDE ROVNÝ

# EBS

DGRE06500600SK01-6501



H	L	A	B	C	D	E	F	G
650	600	220	563	87	80	87	73-83	88-98

5.4	kg
2.9	l
366	W

I	J	K	M	N	O	P
58-68	-	min.100	560	-	-	-

A 3x 10x50	B 3x	C 3x	D 3x	E 3x
F 3x	G 3x	H 3x M6x60	I 3x M8x35	J 3x

**1.1**

**1.2**

**1.3**

**1.4**

**1.5**

**1.6**

**1.7**

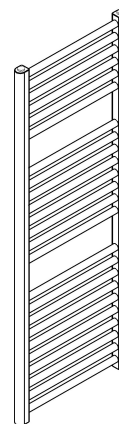




# GRANDE ROVNÝ

# EBS

DGRE09700450SK01-6501



H	L	A	B	C	D	E	F	G
970	450	145	883	87	80	87	73-83	88-98

6.3	kg
3.5	l
415	W

I	J	K	M	N	O	P		
58-68	-	min.100	410	-	-	-		

A	B	C	D	E
3x	3x	3x	3x	3x
10x50				
F	G	H	I	J
3x	3x	3x	3x	3x
		M6x60	M8x35	

**1.1**

**1.2**

**1.3**

**1.4**

**1.5**

**1.6**

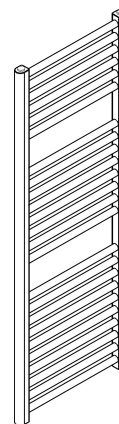
**1.7**



# GRANDE ROVNÝ

# EBS

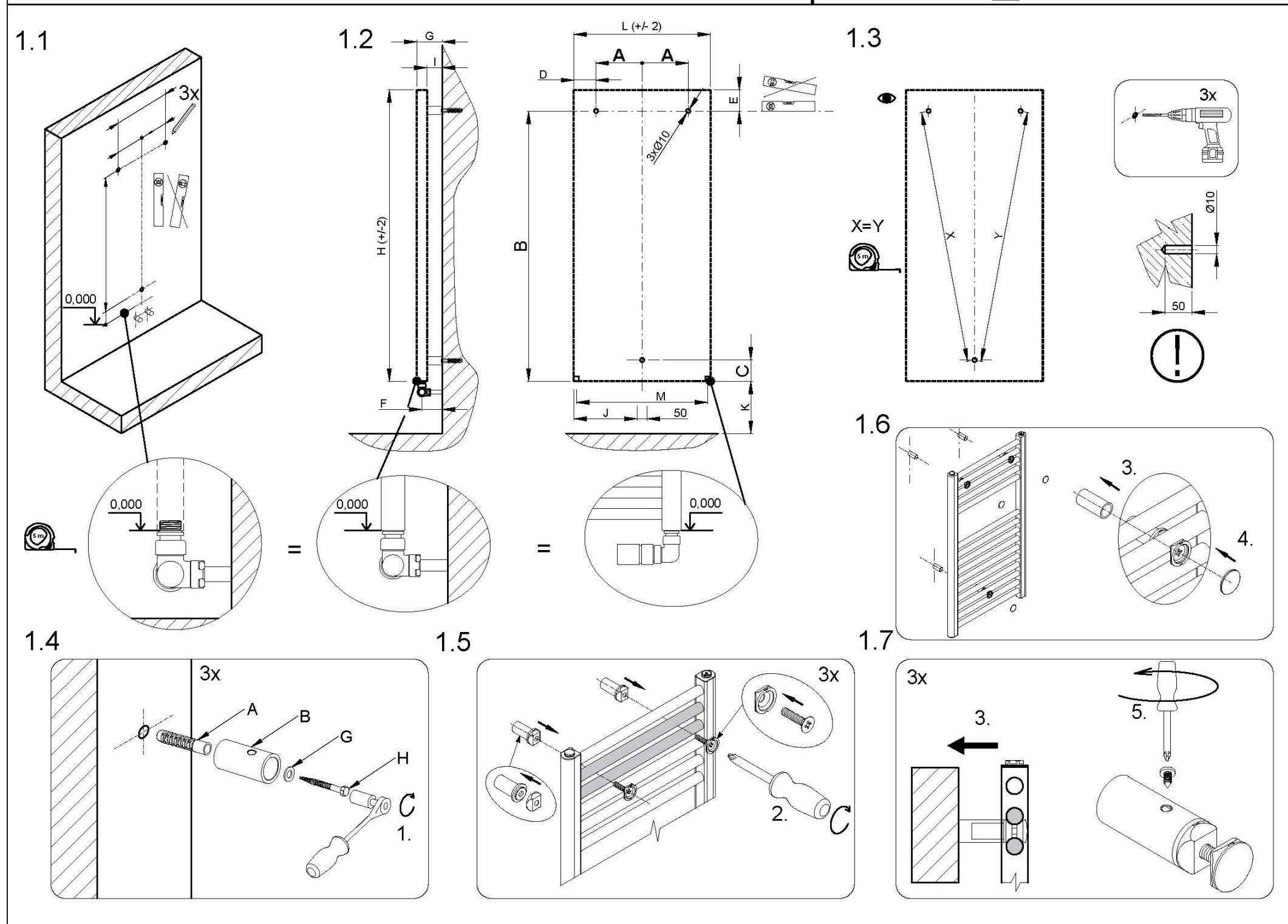
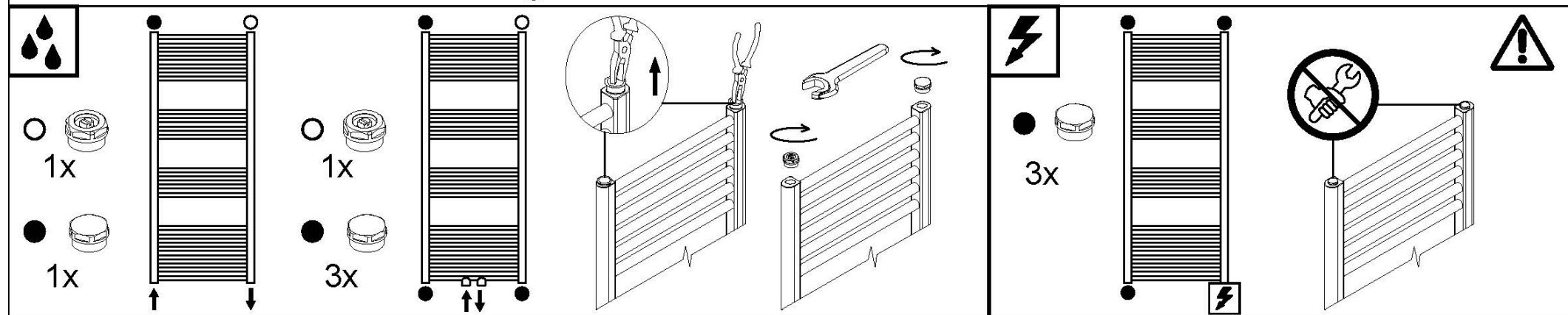
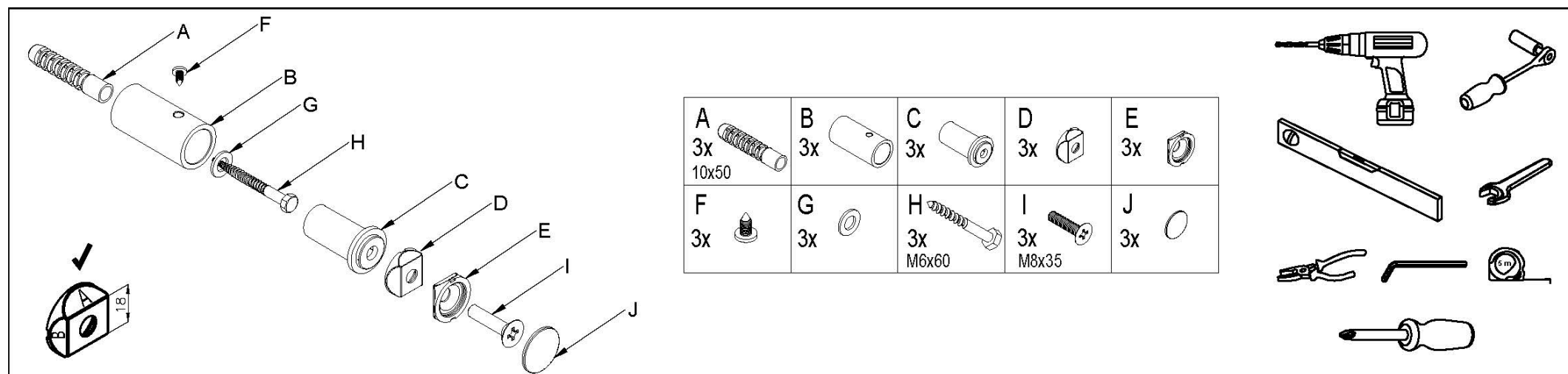
DGRE09700600SK01-6501



H	L	A	B	C	D	E	F	G
970	600	220	883	87	80	87	73-83	88-98

7.8	kg
4.2	l
577	W

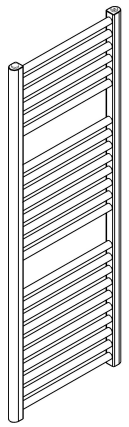
I	J	K	M	N	O	P
58-68	-	min.100	560	-	-	-



# GRANDE ROVNÝ

# EBS

DGRE09700750SK01-6501



H	L	A	B	C	D	E	F	G
970	750	295	883	87	80	87	73-83	88-98

9.2	kg
-----	----

I	J	K	M	N	O	P		
58-68	-	min.100	710	-	-	-		

5.0	l
-----	---

713	W
-----	---

<b>A</b> 4x 10x50	<b>B</b> 4x	<b>C</b> 4x	<b>D</b> 4x	<b>E</b> 4x
<b>F</b> 4x	<b>G</b> 4x	<b>H</b> 4x M6x60	<b>I</b> 4x M8x35	<b>J</b> 4x

1x (white cap), 1x (black cap), 3x (black cap)

3x (black cap)

**1.1**

**1.2**

**1.3**

**1.4**

**1.5**

**1.6**

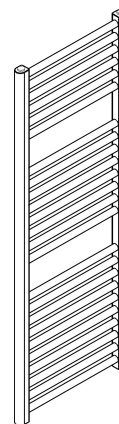
**1.7**



# GRANDE ROVNÝ

# EBS

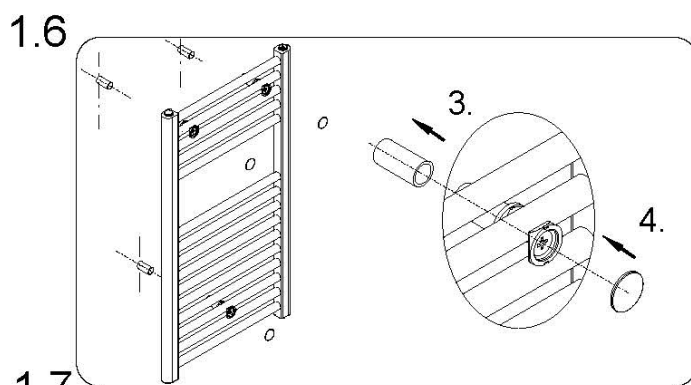
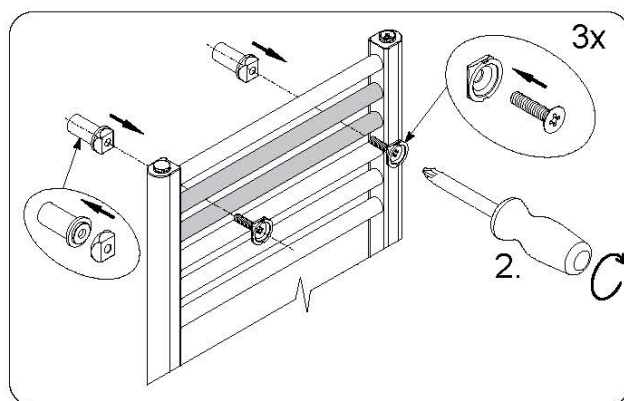
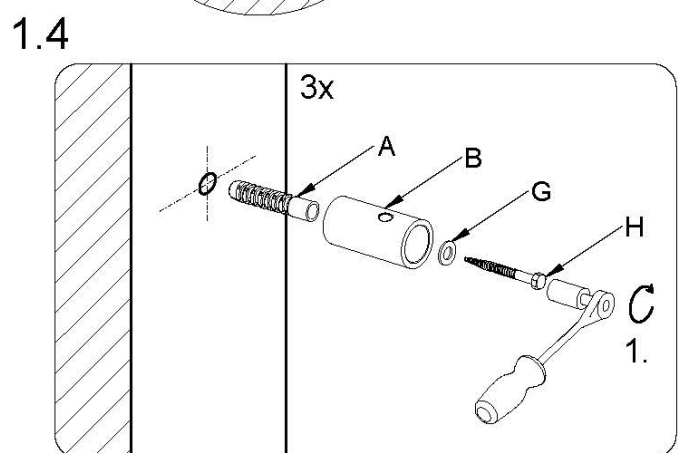
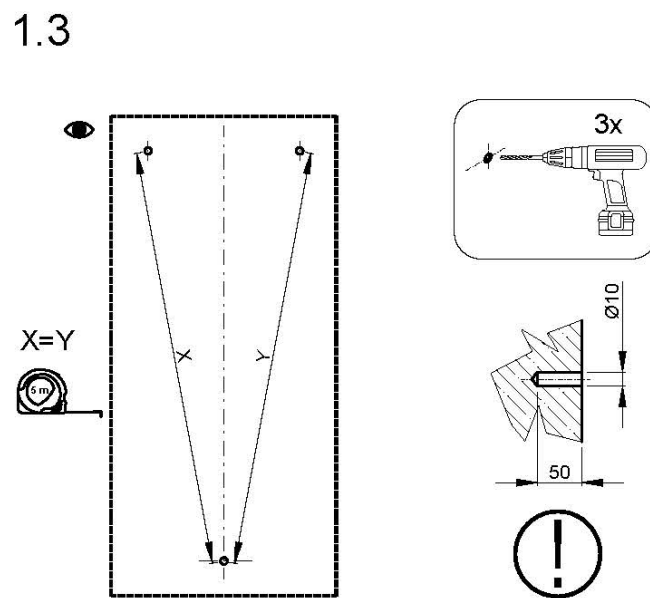
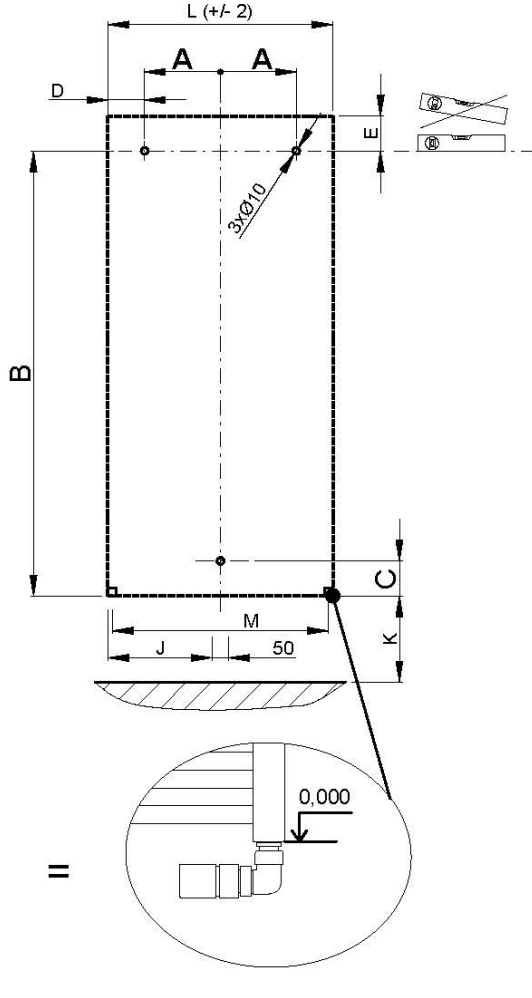
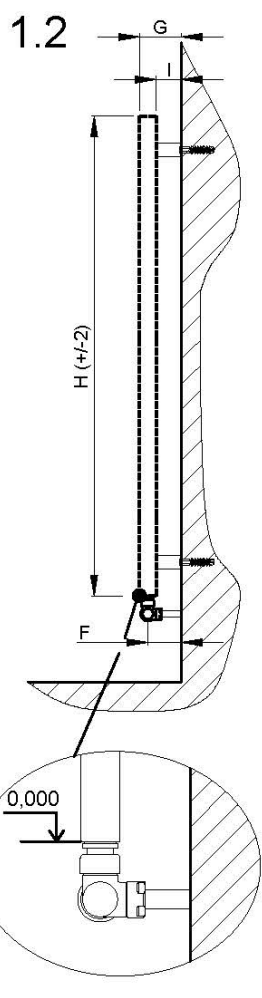
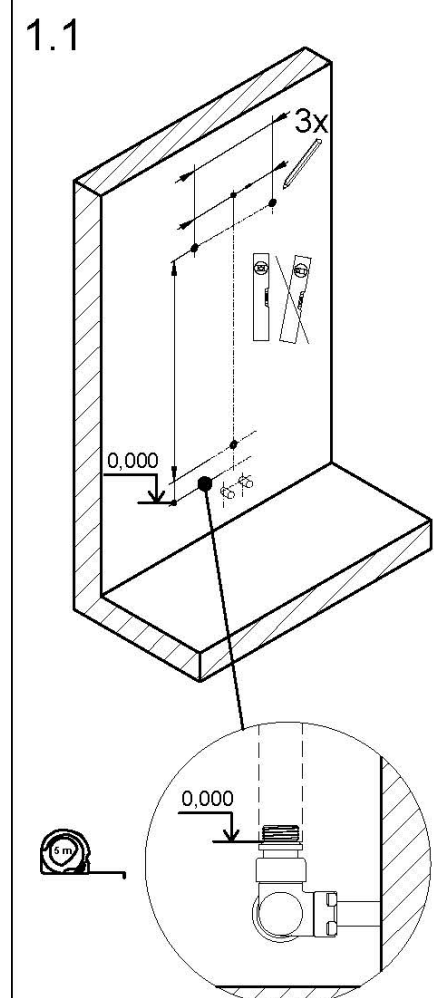
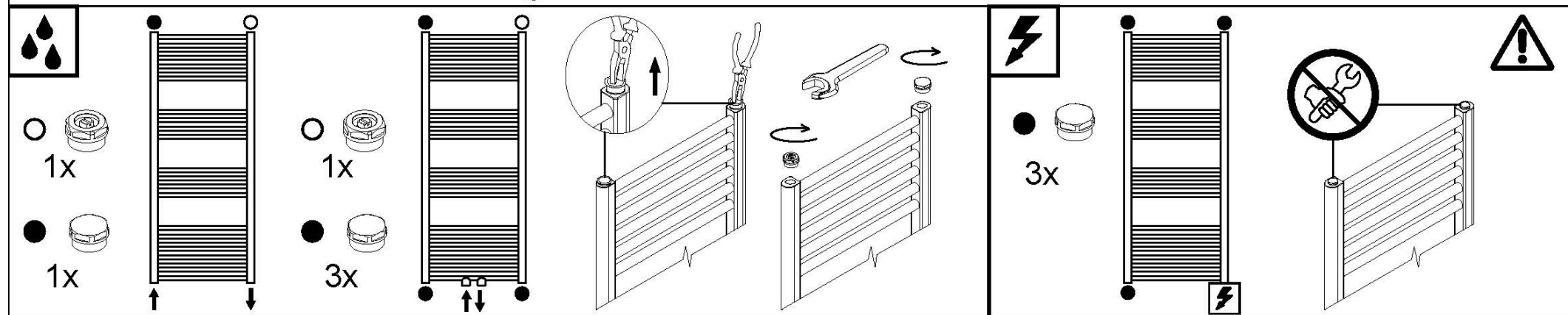
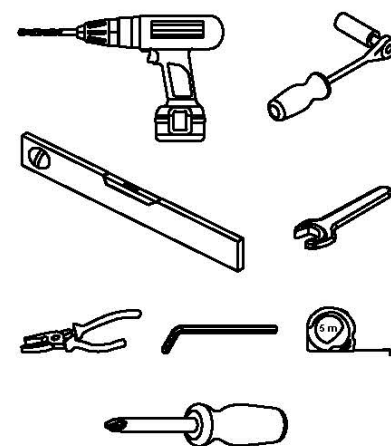
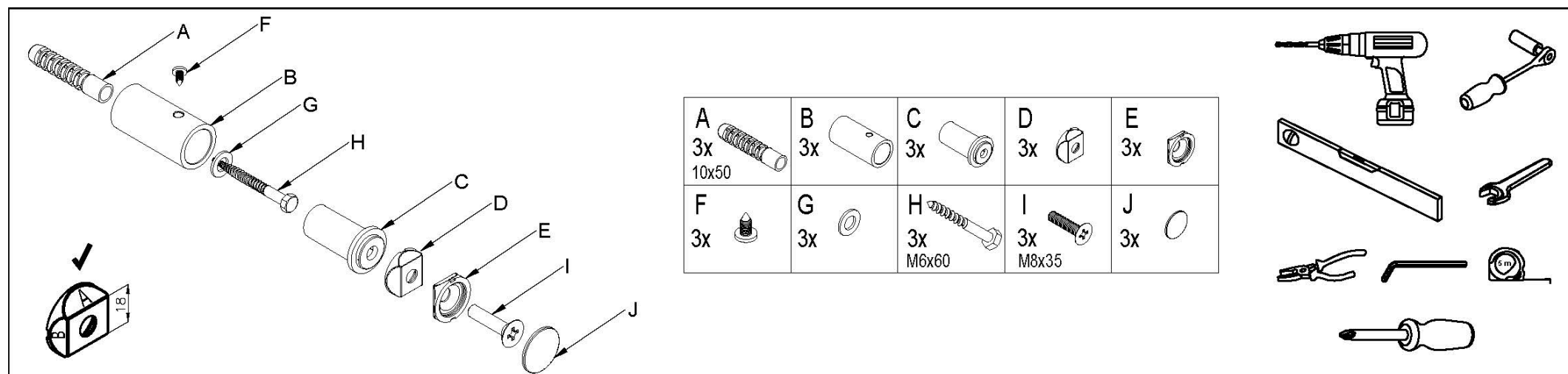
DGRE13300450SK01-6501



H	L	A	B	C	D	E	F	G
1330	450	145	1243	87	80	87	73-83	88-98

8.5	kg
4.7	l
539	W

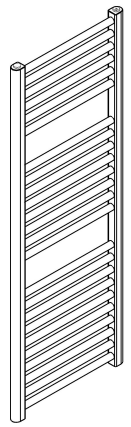
I	J	K	M	N	O	P		
58-68	-	min.100	410	-	-	-		



# GRANDE ROVNÝ

# EBS

DGRE13300600SK01-6501



H	L	A	B	C	D	E	F	G
1330	600	220	1243	87	80	87	73-83	88-98

10.5	kg
------	----

I	J	K	M	N	O	P		
58-68	-	min.100	560	-	-	-		

5.7	l
-----	---

693	W
-----	---

A 3x 10x50	B 3x	C 3x	D 3x	E 3x
F 3x	G 3x	H 3x M6x60	I 3x M8x35	J 3x

**1.1**

**1.2**

**1.3**

**1.4**

**1.5**

**1.6**

**1.7**

**3x**

**1.**

**2.**

**3.**

**5.**

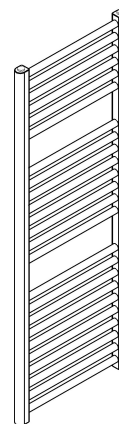




# GRANDE ROVNÝ

# EBS

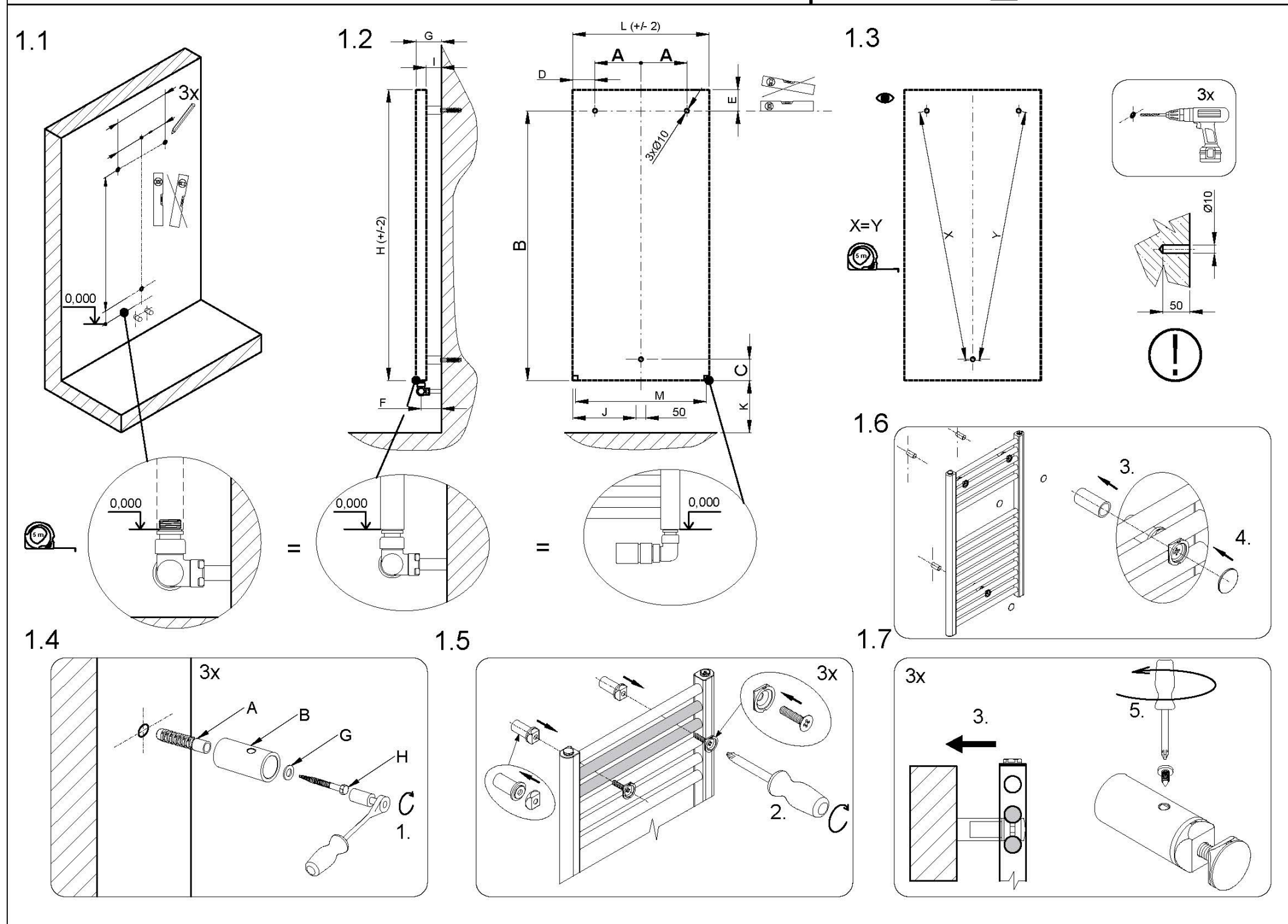
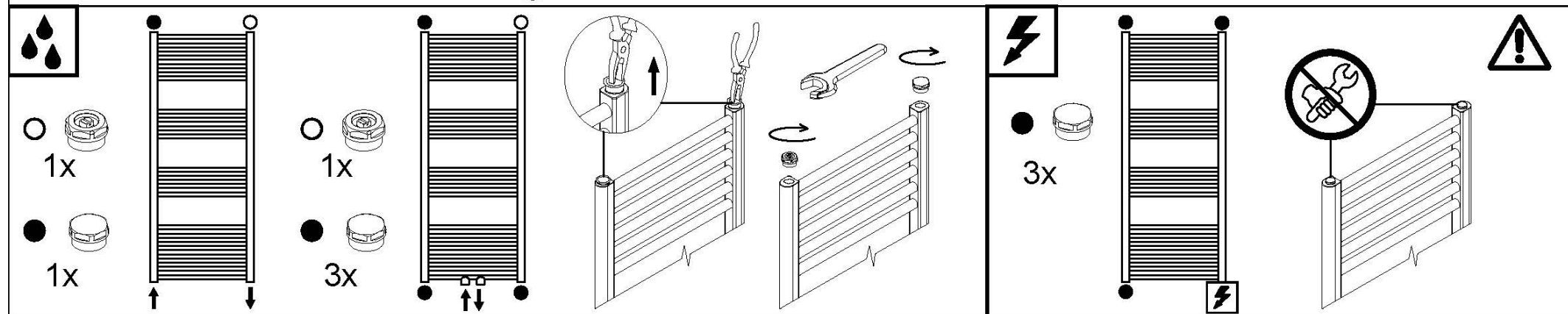
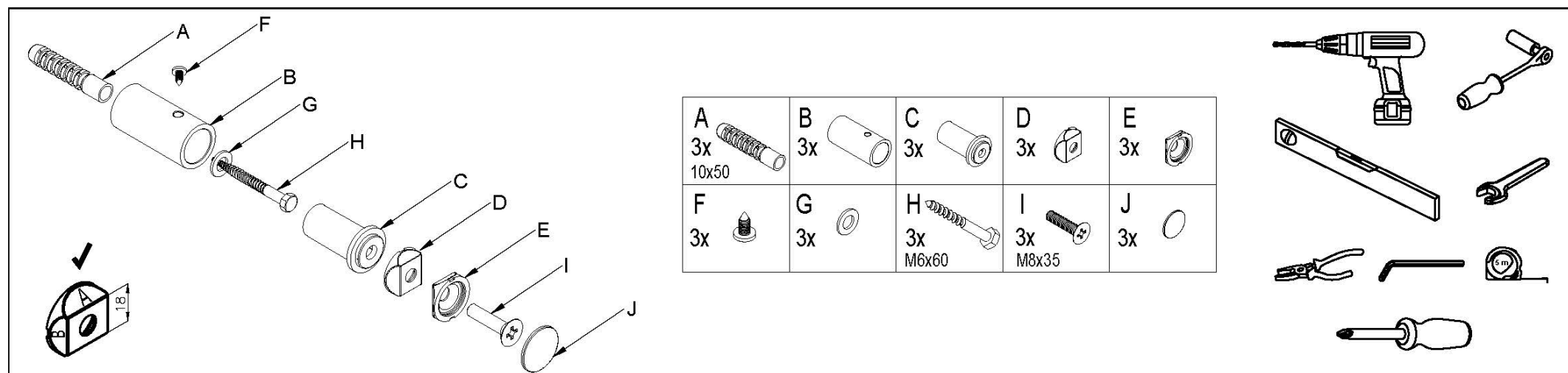
DGRE16900450SK01-6501



H	L	A	B	C	D	E	F	G
1690	450	145	1603	87	80	87	73-83	88-98

10.8	kg
5.9	l
693	W

I	J	K	M	N	O	P		
58-68	-	min.100	410	-	-	-		

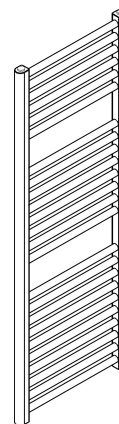




# GRANDE ROVNÝ

# EBS

DGRE16900600SK01-6501



H	L	A	B	C	D	E	F	G
1690	600	220	1603	87	80	87	73-83	88-98

13.1	kg
7.2	l
889	W

I	J	K	M	N	O	P		
58-68	-	min.100	560	-	-	-		

A 3x 10x50	B 3x	C 3x	D 3x	E 3x
F 3x	G 3x	H 3x M6x60	I 3x M8x35	J 3x

1.1: Mounting the radiator to the wall using 3x screws (A) and 3x wall anchors (B).  
 1.2: Connecting the radiator to the heating system using 3x nuts (C) and 3x washers (D).  
 1.3: Tightening the nuts (C) with a wrench.  
 1.4: Tightening the screws (A) with a screwdriver.  
 1.5: Final check of the radiator connection.

1.1: Wall marking and drilling. Dimensions: 0,000, 6, 3x.  
 1.2: Wall profile and mounting bracket dimensions: G, H(+/-2), F.  
 1.3: Mounting bracket dimensions: L(+/-2), A, A, D, E, B, C, J, M, 50, K.  
 1.4: Mounting bracket dimensions: X=Y, 50, Ø10, 50.  
 1.5: Mounting bracket dimensions: 0,000.  
 1.6: Mounting bracket dimensions: 3, 4.  
 1.7: Mounting bracket dimensions: 3x, 5.





# GRANDE ROVNÝ

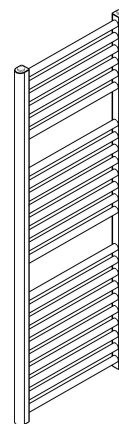
# EBS

DGRE18500450SK01-6501

H	L	A	B	C	D	E	F	G
1850	450	145	1763	87	80	87	73-83	88-98

I	J	K	M	N	O	P		
58-68	-	min.100	410	-	-	-		

12.2	kg
6.8	l
797	W



A 3x 10x50	B 3x	C 3x	D 3x	E 3x
F 3x	G 3x	H 3x M6x60	I 3x M8x35	J 3x

**1.1**

**1.2**

**1.3**

**1.4**

**1.5**

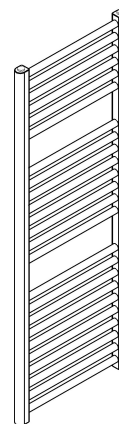
**1.6**

**1.7**

# GRANDE ROVNÝ

# EBS

DGRE18500600SK01-6501



H	L	A	B	C	D	E	F	G
1850	600	220	1763	87	80	87	73-83	88-98

15.1	kg
8.3	l
1027	W

I	J	K	M	N	O	P		
58-68	-	min.100	560	-	-	-		

A 3x 10x50	B 3x	C 3x	D 3x	E 3x
F 3x	G 3x	H 3x M6x60	I 3x M8x35	J 3x

**1.1**

**1.2**

**1.3**

**1.4**

**1.5**

**1.6**

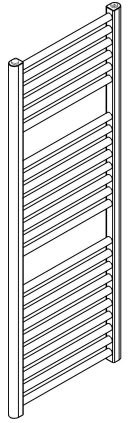
**1.7**



# GRANDE ROVNÝ

# EBS

DGRE18500750SK01-6501



H	L	A	B	C	D	E	F	G
1850	750	295	1763	87	80	87	73-83	88-98

18.0	kg
------	----

I	J	K	M	N	O	P		
58-68	-	min.100	710	-	-	-		

9.8	l
-----	---

1249	W
------	---

A 4x 10x50	B 4x	C 4x	D 4x	E 4x
F 4x	G 4x	H 4x M6x60	I 4x M8x35	J 4x

1x (white cap), 1x (black cap), 3x (black cap)

3x (black cap)

**1.1**

**1.2**

**1.3**

**1.4**

**1.5**

**1.6**

**1.7**

